



Pop-Up Flower Vase Fun Fold Card

Supplies

Daffodil Daydreams Stamp Set
 Heart & Home Designer Series Paper
 Daffodil Dies
 Meadow Dies
 100 Fluid Watercolor Paper
 Mango Melody Cardstock
 Pear Pizzazz Cardstock
 Thick Basic White Cardstock
 Basic White Cardstock
 Memento Black Ink Pad
 Daffodil Delight Ink Refill
 Mango Melody Ink Refill
 Pear Pizzazz Ink Refill
 Water Painters
 Silicone Craft Sheet
 Brushed Brass Butterflies
 Dimensionals
 Liquid Adhesive
 Tear N Tape
 Paper Trimmer
 Dimensionals
 Mini Dimensionals
 Bone Folder
 Paper Snips
 Stamp N Cut & Emboss Machine

Video Tutorial Available here → <https://youtu.be/PYFJpz5hbPs>

Measurements

Thick Basic White Cardstock: cut at 8-1/2" x 5-1/2", scored at 4-1/4" (card base), 1/2" x 2" (stopper), 3/4" x 3-7/8" scored at 3/8" on the long side (mechanism)

Basic White Cardstock: 3-3/4" x 5" (inside layer),

Mango Melody Cardstock: 4" x 5-1/4" (inside card layer)

100 Fluid Watercolor Paper: One full sheet (flowers)

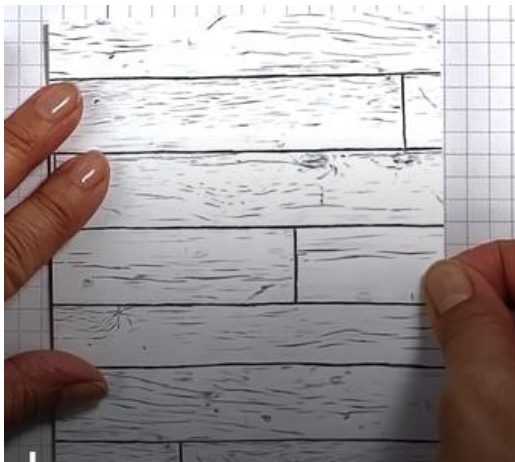
Heart & Home Designer Series Paper: 4-1/4" x 5 1/2", (card front), 2-1/4" x 5" scored on the 5" side at 1" & 4", scored on the 2-1/4" side at 3/4" & 1-1/2" to the first score line (vase)

Instructions

Begin by using the Daffodil Delight, Pear Pizzazz, and Mango Melody Ink Refills. Spread a few drops of the Daffodil Delight Ink Refill on the Silicon Craft Sheet, then spray the piece of 100 Fluid Watercolor Paper with some Water, dip the Water Painter into the Ink Refill and add a little at a time to the watercolor paper until you have the desired look. Do the same thing with the Mango Melody Ink Refill and Pear Pizzazz Ink Refill too. Allow the watercolor paper to dry completely, (it will take about an hour). Once your pieces are dry, using the Daffodil Dies to cut out your pieces.



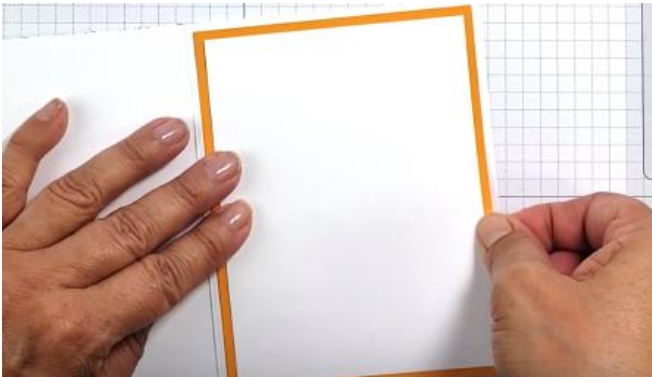
Fold the 8-1/2" x 5-1/2" in half at 4-1/4". Adhere the Heart & Home Designer Series Paper to the front of the card base with your Liquid Adhesive.



Adhere the daffodil cut florals to the card front with Dimensionals. Stamp the sentiment on a scrap piece of Basic White cardstock with Tuxedo Black Memento ink, adhere to the card front with Mini Stampin' Dimensionals.



Turn to the inside panel, and on the right-hand side, adhere the Mango Melody and Basic White Cardstock to the card with your Liquid Adhesive (or whatever is your favorite adhesive).



Now we will work on the vase. We will need the Stopper, Mechanism, and Vase pieces. Adhere Tear N Tape as shown in the photos below. Note: the vase will be cut as shown in the first photo below. Photo also shows where to add the Tear N Tape adhesive on the vase.



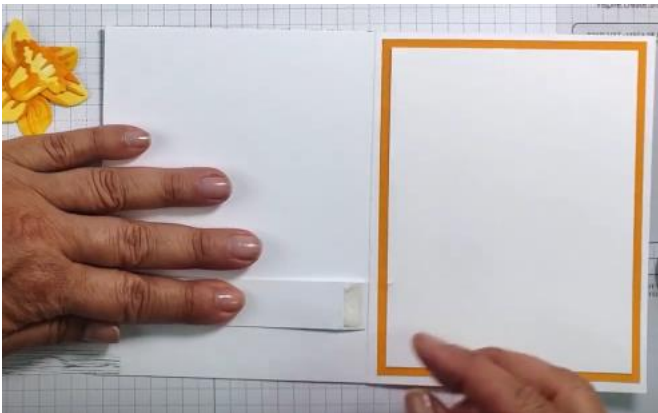
Adhere the $\frac{3}{4}$ " x $3\text{-}7/8$ " piece of to the vase designer series paper as shown below.



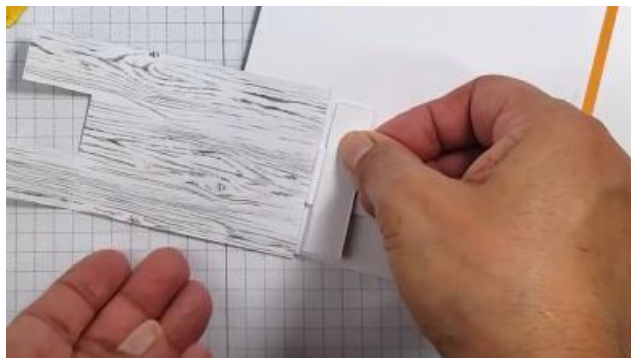
Adhere Tear N Tape to the Mechanism ONLY to the $3/8$ " tab.



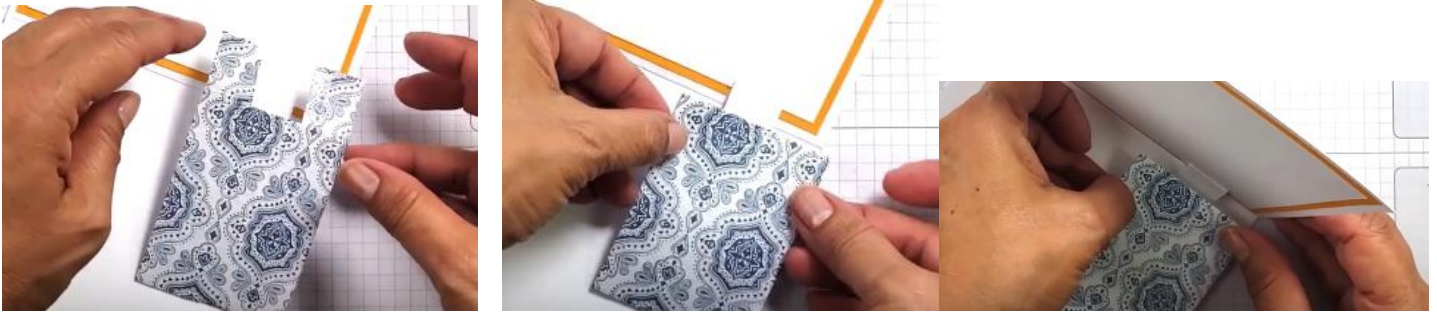
Place the Mechanism piece right on the edge of the fold, but "NOT" over the fold, to ensure the card closes properly. Ensure your vase is not sticking out at the bottom or too high up. Remove backing and fold card over and rub to ensure good adhesion.



Next peel the backing off the Tear N Tape backing pieces of the Stopper. Please right next to the vase piece as shown below.



Remove the backing from the two tabs of the vase. Fold tabs over and pull the right side of the card over, close and rub for firm adhesion.



Open the card and now you have your vase



Add your flowers to the inside of your vase, and your done.



We'll, sprinkle some Brass Butterflies, to the card front.





Gloria Plunkett
DesignzByGloria.com
Images © Stampin' Up!

Products used

Daffodil Daydream Bundle [157795] - Price: \$54.75 - <http://msb.im/1WEo>

Daffodil Daydream Cling Stamp Set (English) [157786] - Price: \$23.00 - <http://msb.im/1WEp>

Daffodil Dies [157794] - Price: \$38.00 - <http://msb.im/1WEq>

Meadow Dies [155852] - Price: \$38.00 - <http://msb.im/1WEr>

Heart & Home 12" X 12" (30.5 X 30.5 Cm) Designer Series Paper [157928] - Price: \$11.50 - <http://msb.im/1WEs>

Basic White 8-1/2" X 11" Thick Cardstock [159229] - Price: \$8.25 - <http://msb.im/1WEt>

Basic White 8-1/2" X 11" Cardstock [159276] - Price: \$9.75 - <http://msb.im/1WEu>

Mango Melody 8-1/2" X 11" Cardstock [146989] - Price: \$8.75 - <http://msb.im/1WEv>

Pear Pizzazz 8-1/2" X 11" Cardstock [131201] - Price: \$8.75 - <http://msb.im/1WEw>

Mango Melody Classic Stampin' Ink Refill [147162] - Price: \$3.75 - <http://msb.im/1WEx>

Daffodil Delight Classic Stampin' Ink Refill [119672] - Price: \$3.75 - <http://msb.im/1WEy>

Pear Pizzazz Classic Stampin' Ink Refill [131160] - Price: \$3.75 - <http://msb.im/1WEz>

Silicone Craft Sheet [127853] - Price: \$6.00 - <http://msb.im/1WF0>

Water Painters [151298] - Price: \$12.00 - <http://msb.im/1WF1>

Tuxedo Black Memento Ink Pad [132708] - Price: \$6.00 - <http://msb.im/1WF2>

Brushed Brass Butterflies [158136] - Price: \$10.00 - <http://msb.im/1WF3>

Multipurpose Liquid Glue [110755] - Price: \$4.00 - <http://msb.im/1WF4>

Tear & Tape Adhesive [154031] - Price: \$7.00 - <http://msb.im/1WF5>

Stampin' Dimensionals [104430] - Price: \$4.00 - <http://msb.im/1WF6>

Mini Stampin' Dimensionals [144108] - Price: \$4.00 - <http://msb.im/1WF7>

Bone Folder [102300] - Price: \$7.00 - <http://msb.im/1WF8>

Paper Snips Scissors [103579] - Price: \$10.00 - <http://msb.im/1WF9>

Paper Trimmer [152392] - Price: \$25.00 - <http://msb.im/1WFA>

Stampin' Cut & Emboss Machine [149653] - Price: \$120.00 - <http://msb.im/1WFB>